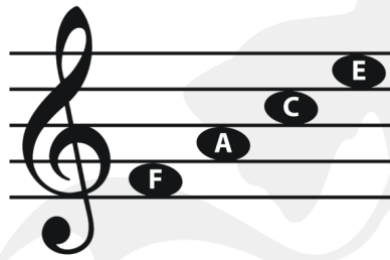
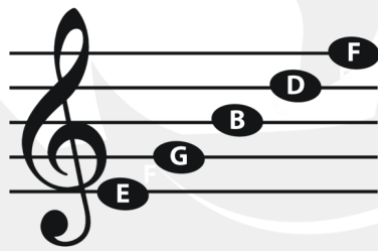
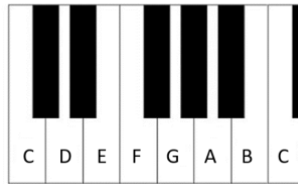


SUBJECT: Music

UNIT: Year 8 Film Music cont. / Ukulele



Keyboard Layout



Right Hand Finger Positions on Keyboard

Tonality:

- The tonality of a piece of music defines the key that it is in and this affects the overall sound quality.

Leitmotif:

- A Leitmotif is music which **represents and expresses** a character, or something within a film.
- Like a Theme Song almost

Composition devices in Film Music

Characters in films often have their own memorable themes – **LEITMOTIFS**

TONALITY is used to reflect emotions or characteristics of the genre/ character.

MAJOR TONALITY sounds happy and can be used to reflect a superhero for example.

MINOR TONALITY sounds sad and can be used to reflect a character's mood.

ATONALITY means no key. This sounds very **DISSONANT** and can be used to reflect scary scenes or horror films.

TEMPO can also be used to reflect the speed of the action in the scene.

Film Music Composers



Koji Kondo

Super Mario Bros. (1985)
The Legend of Zelda (1986)



Michael Giacchino

The Lost World: Jurassic Park (1997)
Medal of Honour (1999)
Call of Duty (2003)



Mieko Ishikawa

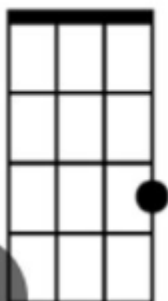
Dragon Slayer (1993)



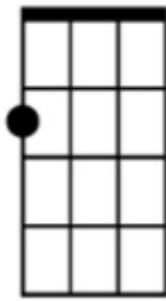
Martin O'Donnell and Michael Salvatori

Halo (2002)

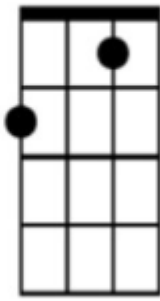
C



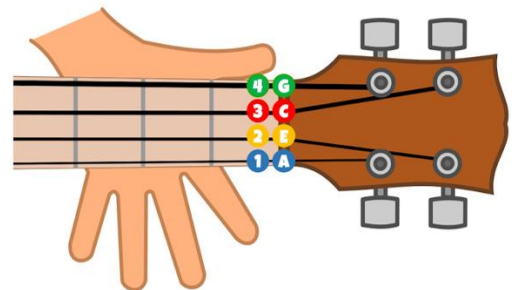
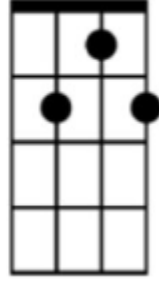
Am



F



G7



Topic Key Learning:

- Musical Element Uses in Film Music
- Composition of Leitmotif to reflect a character.
- Composition Devices & Skills for Film Music
- Using Physical and Vocal Performance Skills Effectively
- Devising a performance on a theme (pressure) and performing.