


SANDHILL VIEW
EST. 1953



PROSPECTUS



A young boy with light brown hair, wearing a white shirt and a blue tie with a school crest, is sitting at a desk and writing in a notebook. He is looking down at his work with a focused expression. The background is slightly blurred, showing other students in a classroom setting. A large blue and green diagonal graphic is in the top right corner.

“ I enjoy attending Sandhill View because of the friendly relationships I have with the teachers. It makes me feel comfortable to come to school. I have always been helped if I have gone to them with a problem. ”

Sandhill View Pupil



“Pupils’ personal development and welfare are a strength of the school. Pupils are well supported, and have trust in the school to help them to succeed in life.”

Ofsted



WELCOME TO **SANDHILL VIEW ACADEMY**

Aspire, achieve and enjoy. These three words underpin our ambition for each and every young person here at Sandhill View Academy.

We constantly strive for the very best outcomes of our pupils. We have relentlessly looked to establish systematic rising trends in results and every year our aim is the same: to be better than last year.

We are proud to serve our local community and we aim to develop confident young people who are individual in personality but similar in their core values of respecting and caring for one another, their community and their environment.

We have a deep belief in our students and we teach them to recognise the value of self-improvement and the duty that they have to others. Ofsted recognised that we 'play an effective role in bringing together people of all ages and backgrounds from within the local community.' They have also noted that we are improving. There is no limit to our ambition for ourselves and our young people.

A MESSAGE FROM OUR HEADTEACHER

Dear Parents,

It is with great pleasure, we welcome you to Sandhill View Academy. I am extremely proud of the journey we have been on since converting to Academy status and joining the Southmoor Multi Academy Trust in July 2015. Everyone at Sandhill View is committed to making a real positive difference to the lives of the young people who attend our school. This has been recognised by Ofsted, in our most recent inspection, who identified our 'unshakeable belief in the potential of the pupils who attend the school.'

It is this commitment that has seen significant improvements in exam results, a factor which reflects our determination to improve the life chances of the young people in our care. We recognise the huge potential in all of our students, we have high expectations and insist on high standards for all. Our students are taught to have excellent attitudes to learning and behave in a respectful way to themselves and others.

Our core values at Sandhill View School are **Aspire, Achieve** and **Enjoy**.

Aspire – We are dedicated to helping students achieve their potential, giving them the tools they need to make informed choices and preparing them for 'life after Sandhill View'. We build strong links with local businesses, with our sixth form team based at Southmoor and have a dedicated 'raising aspirations' team to ensure students get the best understanding of the careers out there and the qualifications needed to succeed. This ensures our students have an attainable goal and a clear roadmap.

Achieve – Here at Sandhill View, we work hard to unlock potential, recognise and develop talent, so that no child is left behind. Whilst we are dedicated to ensure that all students leave us with excellent levels of numeracy and literacy, we also place an equally high value in developing talents in sport, technology and the arts. We also offer fantastic opportunities for extracurricular activities, trips and residential visits, so that our students become richer in character, resilience and develop a strong moral purpose.

Enjoy – Our primary focus, at Sandhill View, is to build strong, positive relationships with everyone in our community, centred around our students. As the old proverb says 'It takes a village to raise a child' and we are passionate about developing strong links with parents and providing a safe and healthy environment to our students, giving them the foundations to be confident, happy and able to succeed.

We are a welcoming and inclusive school, with a strong culture of mutual respect and loyalty, proud to serve our local area. We provide a highly supportive environment, where the well-being of both staff and students are a priority, which allows our students to thrive and succeed. If you would like to visit us, please feel free to contact the Academy. We look forward to welcoming you!



Mrs J. Dodd

Headteacher, Sandhill View Academy



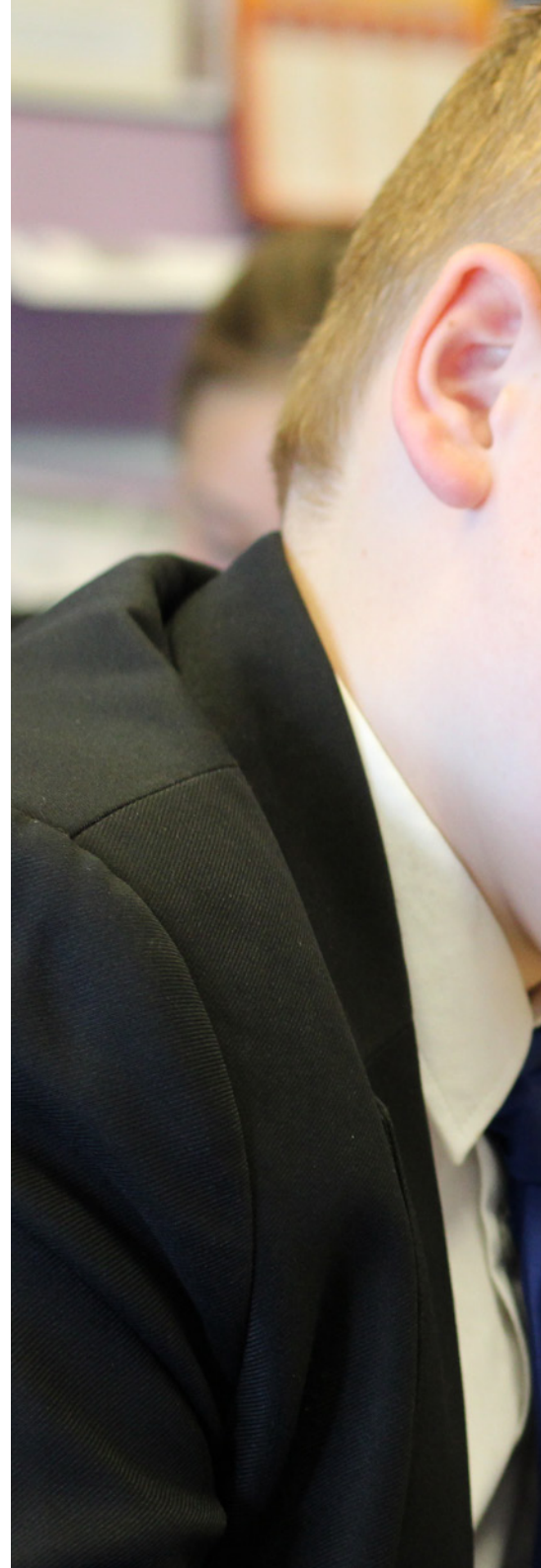
STUDENT SUPPORT


RUNS THROUGH EVERYTHING THAT WE DO

We pride ourselves on the attitude and behaviour of our students both inside and out of school. We are also aware of the challenges that secondary school can bring to young minds and how turbulent our teenage years can be.

To this end we offer a highly experienced pastoral team and support system that gives students the help and guidance that they might need. Whether that be from our team of dedicated House Leaders to the school nurse or our mental health awareness and personal well-being projects and initiatives.

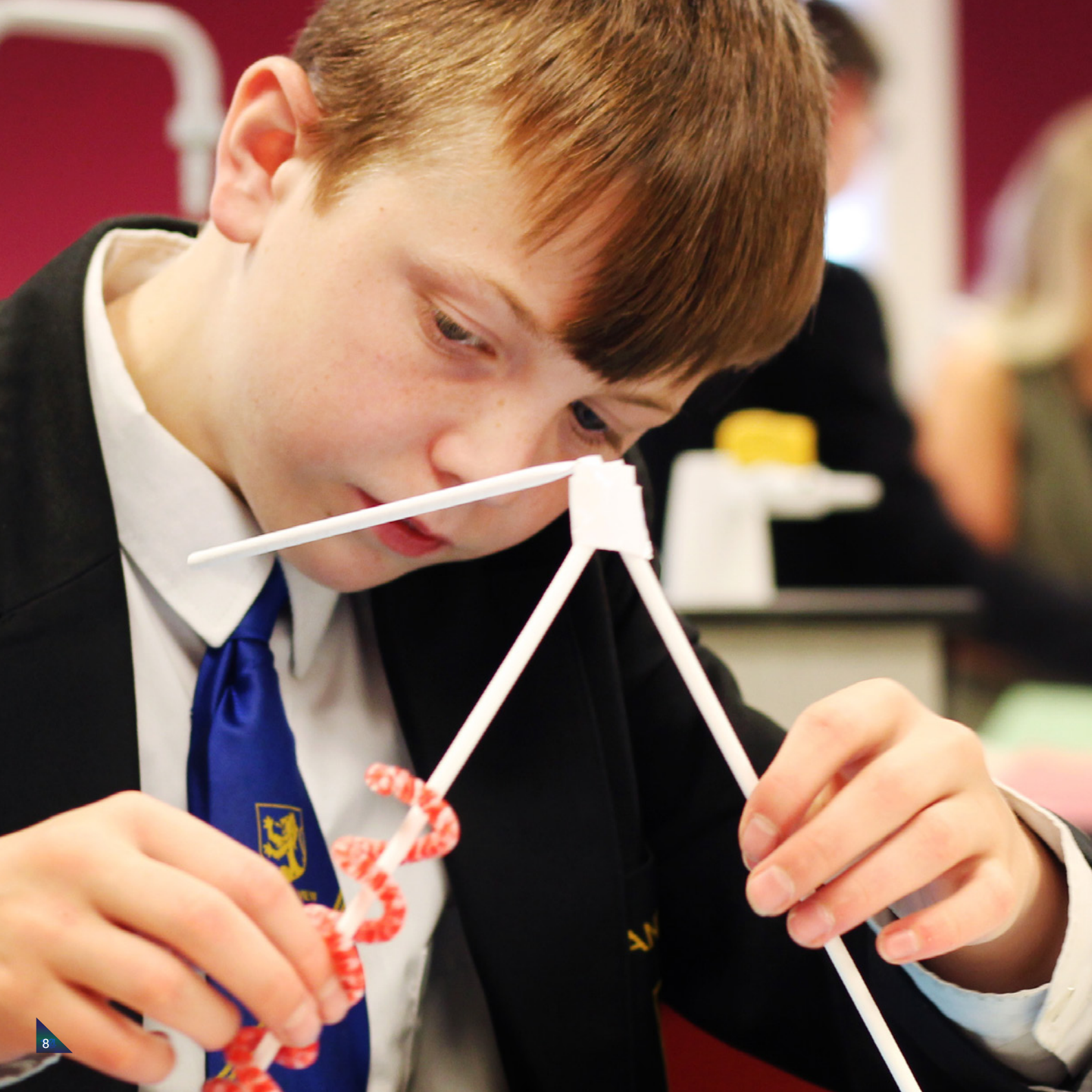
We are also extremely privileged to have scores of students who have truly taken to heart the idea of peer support. We understand that for some students it's not always easy to go straight to a teacher or adult. It is for this reason that we are delighted to have these teams of student volunteers who form part of our 'Peer2Peer' pupil mentors, anti-bullying monitors and a very dedicated Student Council, who have helped bring forth the ideas and concerns of their peers to the school leadership.





“Pupils said they feel safe in school and that they know who to speak to if they are worried. There is a strong culture of safeguarding vigilance throughout.”

Ofsted



A CURRICULUM FOR EVERYONE

At Sandhill View we are developing a curriculum to meet the individual interests of every child. We are constantly changing to meet every need, delivering a range of subjects and activities to excite and engage all of our learners. Our emphasis is on constant improvement and we place real importance on teaching our pupils and training our teachers to be the very best they can be. In an era of schools cutting back and offering less choice, we are doing the opposite, expanding our curriculum by giving our students the opportunity to study topics they can be truly passionate about.

“ I like that I get to do different lessons every day, there’s such a good variety. I also like that you have more responsibilities in Year 7 and as you progress through school, it makes you feel a lot more grown up. ”

Sandhill View Student







LEARNING TOGETHER

Sandhill View is at the forefront of developing new and innovative ideas on learning. We value and respect traditional methods but we know there is always room for improvement. Through our developments in Teaching & Learning, we are proud to work corroboratively with Southmoor Academy so that we both benefit from this shared expertise in the latest teaching practice.

“My daughter thrives at the academy within her friendship group. I have seen her confidence develop and I know that she would be happy to approach all staff if she had any issues.”

Sandhill View Parent





A COHESIVE COMMUNITY

We are about much more than results. Every visitor to the school seems to echo Ofsted's verdict - we are truly a "tolerant community", one where respect and care are more than slogans, they are everyday events. At Sandhill we want to create the young people who will inherit our society and make it a better place. That process starts with a school community which models not just the British Values which are so important to our culture but the spirit of cooperation and teamwork that is essential to our future in a century that is offering new challenges and opportunities.

"Pupils in the school are well prepared for life in a modern Britain. They told inspectors that the school is a tolerant community."

Ofsted

ENJOYMENT & **BELONGING**

We believe that life at Sandhill View should be enjoyed in a safe, secure environment where pupils feel a real sense of belonging. At Sandhill View enjoyment and celebration of success is not taken lightly.

That is why we place so much emphasis on providing a wide range of activities beyond normal lesson time. Be it before or after school, during lunchtimes or holidays or whilst attending our many trips and visits, we let our pupils know that we care about their happiness.





“I love our school activities days because we get to do things we don’t normally do, like trampolining, ice-skating, or rock climbing. It’s great fun!”

Sandhill View Pupil





IT'S ABOUT THE ADULTS OUR **CHILDREN GROW UP TO BECOME**

It's about much more than the eighteen year old who leaves us. It's about what happens next. Our aim is to educate for life. We want to create a generation of adults who can look after themselves but who also care for others. We want to equip young people with all the skills to be good friends, parents, community members and global citizens.

“*The behaviour at Sandhill View is very good. I felt welcome and was met with very pleasant and polite pupils.*”

Sandhill View Visitor

A SIXTH FORM THAT IS **SETTING THE STANDARD**

Students have a unique advantage in that when they complete their GCSEs they can choose to stay with us and become part of a Sixth Form which send students to top destinations. Perhaps it's because of this growing reputation that our Sixth Form is accepting an increasing number of students from schools across the area.

Perhaps it's because of this growing reputation that our Sixth Form is accepting an increasing number of students from schools across the area. However, only Southmoor students and those from Sandhill View Academy are guaranteed a place (subject to achieving the necessary grades). The Sixth Form at Southmoor provides students with a culture of learning as well as excellent curriculum and information assessment. We prepare students for the wider elements of learning, preparing them as a whole person; a person who is positive, engaged and community minded.





“The teachers and staff at the Sixth Form really helped me to go on to achieve the results that I needed. I couldn’t have done it without them. ”

ADAM LIDDLE

Southmoor Alumni.
Now studying Natural Sciences
at Cambridge University

JUST SOME OF OUR MOST RECENT A LEVEL RESULTS & DESTINATIONS



Alexander Baker

A*A*A*

*Heading to Northumbria University
to study Fine Art*



Rowin Baldwin

A*AA

*Heading to Manchester University to
study Maths & Computer Science*



Alexander Barszczewska

A*AA*

*Heading to Northumbria University
to study Interior Design*



Charlotte Blackery

A*A*A*

*Heading to Edinburgh University
to study Medicine*



Lucy Bulmer

A*A*A*

*Heading to Newcastle University
to study Medicine*



Jeremy Hendricks

AAA*

*Heading to Durham University
to study Law*



Eve Cuming

AA*A*A

*Heading to Warwick University
to study Physics*



Emily Flett

AAAA*

*Heading to Newcastle University
to study Maths & Psychology*



Lucy Giles

AA*A*

*Heading to Sunderland University
to study Medicine*



“ I had some fantastic teachers, I’m over the moon with the results I achieved. ”

Tyreke Holness

Southmoor Alumni. Now studying Medicine at Oxford University



THE SIXTH FORM
at Southmoor Academy

FIND OUT MORE ABOUT OUR
SUCCESSFUL SIXTH FORM AT:

www.thesixthformatsouthmoor.co.uk



Sandhill View Academy

GRINDON LANE, SUNDERLAND, SR3 4EN

T: 0191 594 9992 E: [INFO@SANDHILLVIEW.CO.UK](mailto:info@sandhillview.co.uk)

[WWW.SANDHILLVIEW.COM](http://www.sandhillview.com)

